

Skater Halfpipe wall decal

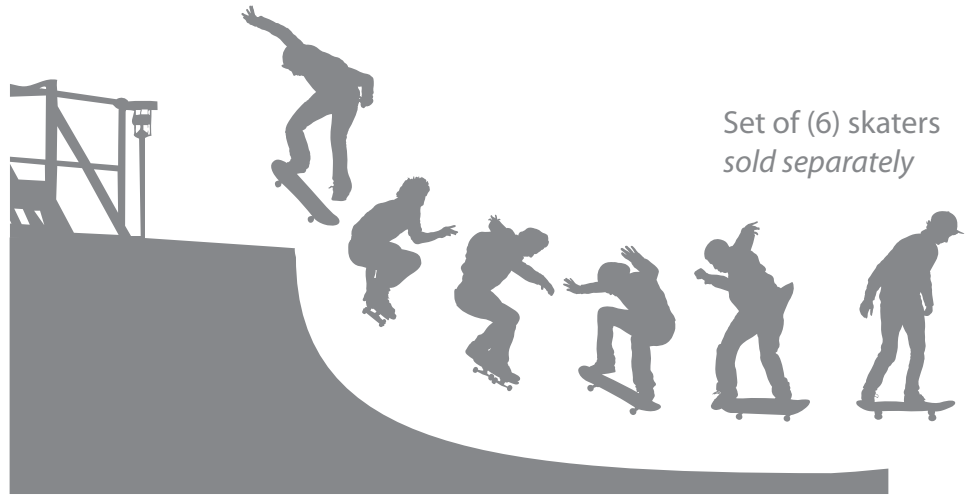
This special instruction sheet is a supplement to the general application instructions sheet, also included in this order. Please review this document for general application guidelines. This decal set comes in pieces for easier application. Use the numbered sheet diagram below to identify decal pieces with the wall diagram/installation instructions on the back.

Step 1: Preparation

This is what it looks like when finished

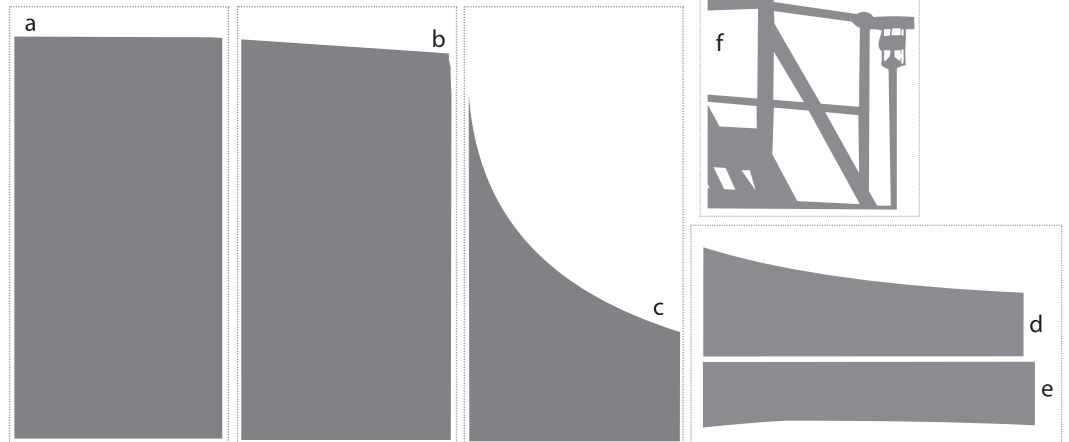
Pipe Specifications:

72" high x 144" wide



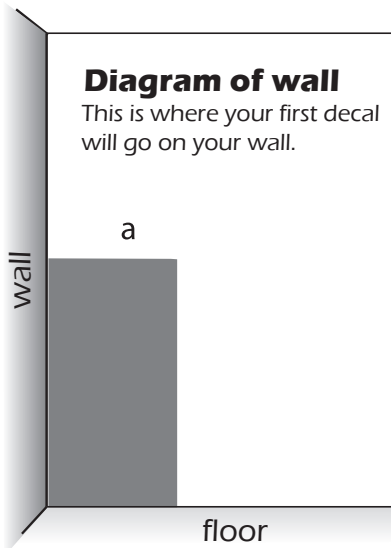
This is what you get:

This is how the sheets look.



Step 2: Placement

Use in conjunction with general instructions for application tips.



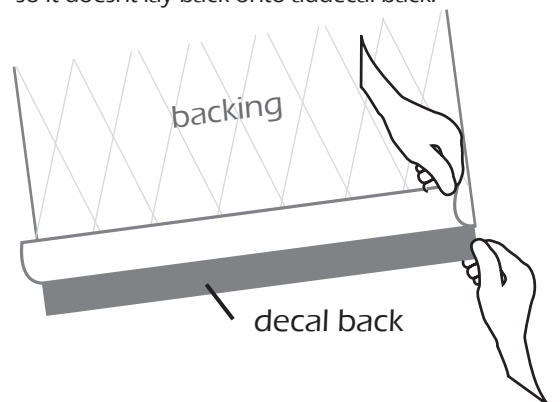
NOTE: Large decal pieces do not contain clear top sheet. This is only necessary when there are a lot of cutouts in the decal, to keep the decal from flopping around.

Remove only a few inches of backing at a time.

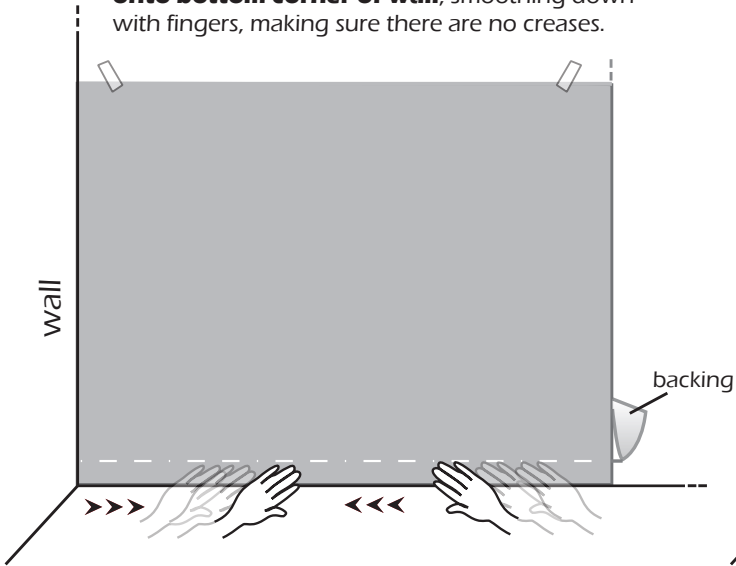
Caution: Take care not to allow decal adhesive to stick to itself.

Vinyl sticks hard to other vinyl!

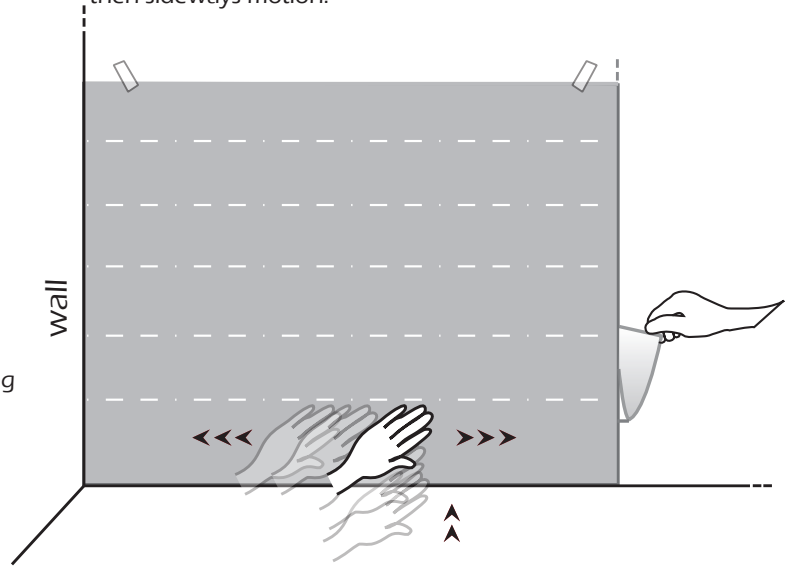
- 1 Start with piece (a) and use wall edge to guide placement. Remove a few inches of backing from the bottom of decal, so that a strip of decal is exposed. Make a crease in the backing at fold so it doesn't lay back onto the decal back.



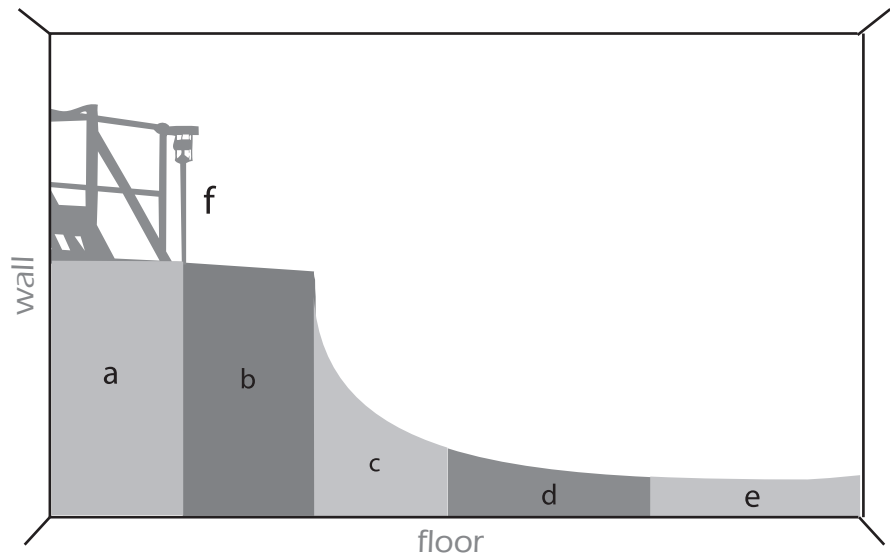
- 2** Tape top corners of the sheet to the wall to free hands while applying. **Stick exposed adhesive onto bottom corner of wall**, smoothing down with fingers, making sure there are no creases.



- 3** **Pull backing up to expose more of the adhesive**, while smoothing with your other hand in an upward and then sideways motion.



- 4** Repeat steps 1-3 for each decal sheets (a-e). To place sheet (f) remove entire backing first, then place entire sheet in position per application instructions. Squeegee down and then remove clear top sheet.



- 5** Place skaters (sold separately) wherever you like with the halfpipe decal.

