

**Application Instructions:**

Our graphics are so easy to put up, anyone can do it. But beware some of the fancier designs can be tricky if you don't follow the instructions.

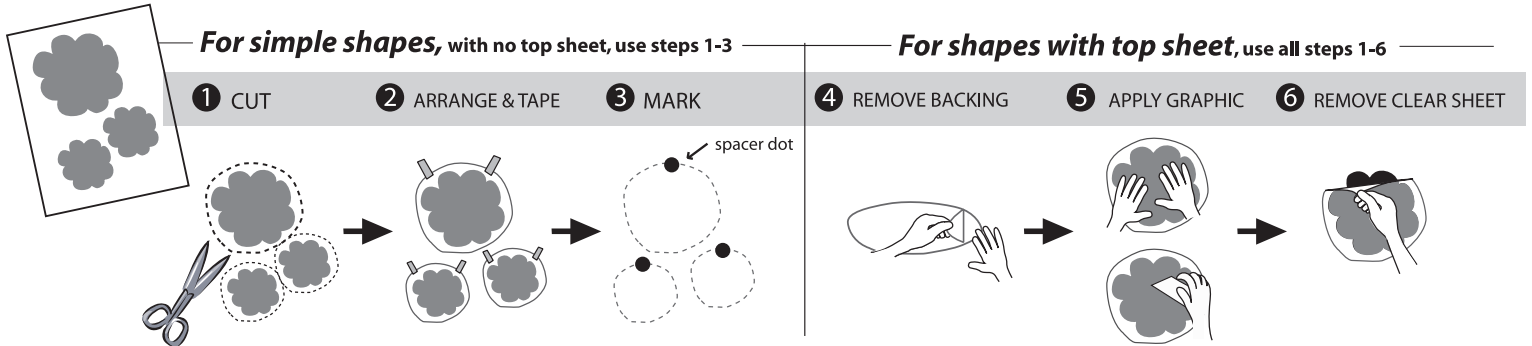
For a successful project, please read the Special Instructions and Warnings before starting your application.

**Each kit includes:**

- set of graphics
- applicator tool
- spacer dots, to aid in precise positioning

**Other tools that may be helpful:**

- scotch tape
- scissors
- measuring tape or ruler



**Wall Preparation/Warnings:**

As with any wall decor application, there should be care taken to ensure that you will have a successful application.

- Please make sure the surface is clean and dry before applying decals. Just as these decals stick so well to walls, so do dirt and oils. Overhandling of the decal sticky side may accumulate natural oils from your skin to decrease decal adherence.
- Special Note/Bathrooms:** If the bathroom is used for showering, the surfaces can have a filmy buildup that should be cleaned before application of decals. Also, the decals, once applied, should be allowed to form a good bond to the surface (24 - 48 hours) before exposed to heat and moisture.
- Climate:** Do not install in temperature below 50 degrees or higher than 95 degrees.
- Reusability: Keep the backing and top sheet!** If desired you can remove and replace the decal as many times as needed. For simple shapes, just peel right off! for more ornate decals, smooth the top sheet back on the decal to lift it up off of the surface. Note: But if repeated many times, this may have an effect on the adherence of the decal for long-term use.
- Adhesive Cure/Bond:** For the greatest adherence to your surface, once placed, allow the decal time to cure and bond with the surface (24 -48 hours).

**Note:** Modern Wall Graphics have been tested on and successfully removed from many surfaces. Due to the variety of surfaces, we cannot guarantee that our decals will adhere to all surfaces. Please follow our guidelines for installation and have fun with them!

**Application Instructions:**

1. Choose the look you want to achieve with your graphics. Cut apart individual graphics.
  2. Before removing any backing, use scotch tape to place the graphics on the wall/surface where you want them.
  3. As you take the graphics off to prepare to place them, use the spacer dots as placeholders to "remember" your chosen placement on the wall/surface.
- Simple shapes with no top sheet**--Just peel and stick! And you are done. Skip next steps.
4. **More ornate decals:** These decals have a clear top sheet over decal. This acts as a carrier of the graphic onto the wall.

Prep: Lay decal on flat surface face up. Use squeegee to firmly smooth over the surface of the decal to make sure it is stuck well to top sheet.

- Flip decal over, upside down on a table or other flat surface. Remove the white backing from the decal. IMPORTANT: As removing backing, if any part of the decal does not readily come away from backing, simply make a crease in the backing at that spot, and the decal will pop away off of the backing.
  - 5. Place decal with top sheet onto wall/surface. Smooth squeegee over entire surface of graphic to insure firm adherence to the wall/surface, working from the middle outward, to smooth out bubbles.
  - 6. Remove top sheet by sliding it down off of the decal flatly down the surface of the wall. For intricate designs, use the applicator to hold the graphic in place while peeling away the top sheet.
- Repeat directions for each decal. And you're done!

**Easy Removal**

The flat edge of your Chizzler squeegee can be used to remove your decals. Simply slide the squeegee under any decal edge (like a spatula) to pick it up off of the wall/surface. Then peel the decal off.

**Large Project?** Larger squeegees available at [www.wallslicks.com](http://www.wallslicks.com)!



# Warning!

## READ THESE INSTRUCTIONS BEFORE STARTING YOUR PROJECT!

If you are applying this product to **NON-POROUS SURFACES** (any surface that is solid, smooth, hard and laminated), such as plastic, metal, glass, or laminate, special care is needed for successful application.

These surfaces receive this product very strongly! There is a strong static force between vinyl and these types of surfaces, which cause the decals to attract to them and stick really firmly without any squeegeeing. For this reason, you can use the following tips to aid your application process.

### Tips:

1. You can wet your surface slightly, so that on applying if you need to adjust the placement of the decal, you can lift it back up and adjust. This is useful also for squeegeeing out air bubbles. Use your applicator tool to push air bubbles outward from the center, out to the edge of the decal.

The water will evaporate quickly.

2. If your project is large, you will need 2 or more people to help you,

3. Remove a small portion of the backing at a time! Do NOT remove the entire backing at once

4. Do not let the decal stick to itself either. This follows the same reasoning: the material used to fabricate these decals is vinyl, which is waterproof and non-porous, so will stick to itself with the same vigor as any other nonporous surface. But since the decals are not rigid, they are even harder to unstick from itself.